

## Title of Manuscript (Format and Guidelines for Manuscript Preparation and Submission to Jurnal Kejuruteraan)

(Tajuk Manuskrip – Format dan Garis Panduan Penyediaan Manuskrip dan Penghantaran ke Jurnal Kejuruteraan)

Ukwueze Bonaventure Emeka\* & Abu Bakar Sulong  
Faculty of Engineering & Built Environment, Universiti Kebangsaan Malaysia, Malaysia  
Norhamidi Muhamad  
School of Mechanical Engineering, Universiti Sains Malaysia, Malaysia

Abu Bakar Sulong  
Faculty of Engineering, Gifu University, Japan

### ABSTRACT

*Put your abstract here. Use single spacing and should be typed using Times New Roman, Font size 10. Abstract are written preferably between 200 to 250 words. The abstract should be clear, descriptive and should provide brief information to the problem. This should generally be followed by a statement regarding the methodology and a brief summary of result. The abstract should end with a comment on the significance of the result or a brief conclusion. For articles submitted from Malaysia or Indonesia, the abstracts need to be written in both Bahasa Malaysia (Malay) and English, whereas for articles submitted from other countries, the abstracts only need be written in English only.*

*Keywords: (maximum of 5 keywords separated by semi colon (;)) two component injection molding; Example: Material characterization; Morphology; Density*

### ABSTRAK

*Letakkan abstrak anda di sini. Gunakan jarak tunggal dan dengan menaip menggunakan Times New Roman, saiz Font 10. Abstrak disarankan antara 200 hingga 250 patah perkataan. Abstrak harus jelas, menjurus dan harus memberi maklumat ringkas kepada permasalahan. Ini secara amnya diikuti dengan kenyataan mengenai metodologi dan ringkasan hasil. Abstrak harus berakhir dengan komen mengenai kepentingan hasil atau kesimpulan ringkas. Untuk artikel yang dikemukakan dari Malaysia atau Indonesia, abstrak perlu ditulis dalam Bahasa Malaysia (Bahasa Melayu) dan Bahasa Inggeris, sedangkan bagi artikel yang dihantar dari negara lain, abstrak hanya perlu ditulis dalam bahasa Inggeris sahaja.*

*Kata kunci: (maksima 5 kata kunci dipisahkan oleh setengah kolon (;)) dua acuan suntikan komponen; Contoh: Pencirian bahan; Morfologi; Ketumpatan*

### INTRODUCTION (HEADING LEVEL 1)

This document contains the guidelines for manuscript preparation and submission. Please adhere strictly to these instructions to assure rapid production of journal article. Please use this template in preparing your manuscript. Do not indent the first line of paragraph following a heading or sub heading. Use single spacing for main document. Note that there is only one space between sentences. Use single spacing for main document. Note that there is only one space between sentences. The manuscript should be prepared using Microsoft® Word and it must exceed 3000 words, including table, figures and references and not more than 7000 words. Similarity of

manuscript should be below than 30% for normal article, below 20% for review article excluding list of references. Article will undergo similarity screening before proceed to reviewers. Self-citation from manuscripts (all authors) should not more than 30% of number references. The text should be typed within a print area with margins similar to this template. You may include the page number for the purpose of review process. The body of the manuscript should be typed in single-column, and single space. The title should be in sentences case and centered across the page. It should be typed in 14-point Times New Roman. The paper should include names. The authors name should be typed in Times New roman, font size 9. The corresponding author should be marked with an

asterisk (\*). The body text should be typed in Times New Roman, font size 10. Please use the following headings: ABSTRACT, INTRODUCTION, METHODOLOGY, RESULTS AND DISCUSSION, CONCLUSION, ACKNOWLEDGEMENT and REFERENCES.

Indent 5 spaces subsequent paragraphs. Indent 5 spaces subsequent paragraphs. Indent 5 spaces subsequent paragraphs. Do not use numbers or alphabets in headings and sub-headings (*Example A. Introduction 1. Body*). Use the following style for headings and sub-headings.

Subsection Headings, Tables and Figures (Use This Style for Level Two Headings)

The figures and tables should be numbered consecutively and inserted within the text. The captions for figure should be placed below the illustrations, whereas the captions for table should be placed above the table content. Both captions should be typed in Times New Roman, font size 9.

Example of figure and its caption is shown in Figure 1. Example of table and its caption is shown in Table 1.

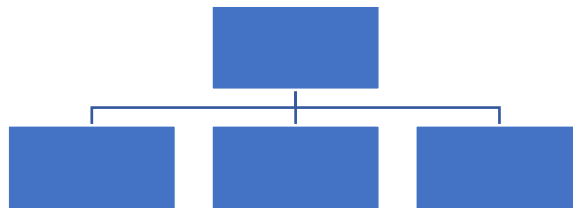


FIGURE 1. This is an example of a figure

TABLE 1. This is an example of a table

Heading	Heading	Heading

Photographs, Figures and Equations, Reference Style (Use This Style for Level Two Headings)

All photographs and figures should have a good resolution and contrast quality. At least 300 dpi is applied for the resolution. The equations must use equation editor as their typesetting and it should be centered across the column, numbered consecutively with the respective number given in parentheses as follows:

$$E = mc^2 \quad (1)$$

The references should cited in text as follows:

Ghi et al. (2017) mention .....for authors more than two  
 ....similar behavior been observed (Ghi et al. 2017) for authors more than two.

Ghi and Pqr (2017) mention .....for two authors  
 ....similar behavior been observed (Ghi and Pqr, 2017) for two authors.

#### REFERENCES

Note that Chicago Manual of style uses the "hanging indent" style for references. All publications cited in the text should be included in the reference list. Reference should be listed in alphabetical order. A list of references should be provided under the section of references. List of references should have minimum 15 references, which should have recent five years published references. More than 2/3 of references should cite from journals, books not proceedings and internet. DOI only required for journal which still in-press by publisher.

All journal names, publisher name need to write in full without abbreviation. Such as *J. Mech. Eng.* should be writing as *Journal of Mechanical Engineering*.

Examples of references:

#### JOURNAL ARTICLE WITHOUT ISSUE NO

Yusop, N.M., Wahab, D.A. & Saibani, N. 2016. Realising the automotive remanufacturing roadmap in Malaysia: challenges and the way forward. *Journal of Cleaner Production* 112: 1910-1919.

#### JOURNAL ARTICLE WITH ISSUE NO

Rasidi, N.M.M., Abdullah, S., Wahab, D.A., Ramli, R., Mansor, M.R.A. & Yasin, R.M. 2016. Generation of idea for product innovation in design course. *Journal of Cleaner Production* 96(2): 411-418.

#### CONFERENCE ARTICLE

Ukwueze, B. E., Sulong, A. B., & Muhamad, N. 2016. Rheological investigation of powder injection moulding materials using polyethylene with palm strearin binder system. *Proceeding APSIM (Advanced Processes and Systems in Manufacturing; An International Conference) 2016*, 17-18.

#### BOOK

Hendrick, H.W. & Kleiner, B. 2016. *Macroergonomics: theory, methods, and applications*. CRC Press.

#### BOOK (EDITION)

Bhattacharya, A. & McGlothlin, J.D. 2012. *Occupational ergonomics: theory and applications*. Second edition. CRC Press.

#### THESIS

Gaaz, T.S. 2017. Injection molded Halloysite Nanotubes-Thermoplastic Polyurethane nanocomposites for mecahnical and physical properties enhancement. Thesis PhD Universiti Kebangsaan Malaysia.

#### BULLETIN/NEWSPAPER

Hassan, R. & Mohamed, S. 2017. Urban Public Transport: Policies and Implementation. *Jurutera*, January: 5-11.

#### TECHNICAL REPORTS

Ross, R. J. 2010. Wood handbook: wood as an engineering material. General technical report FPL; GTR-190. Madison, WI: US Dept. of Agriculture, Forest Service, Forest Products Laboratory.

#### ONLINE SOURCES

Kawasaki, J.L. 1996. Computer administered surveys in extension. *Journal of Extension*, 33(3): 204-210. <http://www.apa.org/journals/webref.html> [18 November 1999]

#### INTERVIEW

Salleh, A. 2010. University Transformation, Interview, 12 May.

#### SOFTWARE MANUAL

MSC Nastran. 2003. Quick Reference Guide. Santa Ana: MSC. Software Corporation.

#### SLIDE

Bhiwapurkar, A. 2014. Lean versus Agile Manufacturing. Slide.

\*Ukwueze Bonaventure Emeka

Department of Mechanical and Production  
Engineering,  
Institute of Management and Technology,  
P.M.B.01079,  
Enugu, Nigeria.

Abu Bakar Sulong, Norhamidi Muhamad,  
Zainuddin Sajuri

\*Corresponding author; email:  
[ukwbonaem@gmail.com](mailto:ukwbonaem@gmail.com)

Department of Mechanical & Materials  
Engineering,  
Faculty of Engineering & Built Environment,  
Universiti Kebangsaan Malaysia, Malaysia  
Farrashaida Mohd Salleh  
Faculty of Mechanical Engineering,  
Universiti Teknologi Mara (UiTM), Shah Alam  
40450, Malaysia.

Received date : 25<sup>th</sup> May 2017

Accepted date : 14<sup>th</sup> September 2017

Online first date : 16<sup>th</sup> October 2017

Published date : 12<sup>th</sup> September 2017

## ARTICLE SUBMISSION

### Step 1:

Before submitting the manuscript, the author should understand and comply to:

- the journal's submission rules, and
- articles should be written according to the JKUKM style.

The template of the manuscript can be downloaded from this link:

[http://www.ukm.my/jkukm/?page\\_id=20](http://www.ukm.my/jkukm/?page_id=20)

OR just select Author Guidelines: Templates of manuscript



### Step 2:

- To make a submission, select the (Submit a Manuscript: Online Submission) to proceed to the first step of the submission process.



## Step 3:

- If you are already a user to the JKUKM site, please login to the site. If you are not a user yet, please register with this site.



The screenshot shows the login page of the Jurnal Kejuruteraan website. At the top, there is a header with the University of Kebangsaan Malaysia (UKM) logo, the journal title 'Jurnal Kejuruteraan', and the publisher 'PENERBIT UKM PRESS'. Below the header is a navigation menu with links: HOME, ABOUT, LOGIN, REGISTER, ANNOUNCEMENTS, ETHICS STATEMENT, USER GUIDES, CONTENTS, and WEBSITE. The main content area is titled 'Login' and contains a form with fields for 'Username' and 'Password'. There is a checkbox labeled 'Remember my username and password' and a 'Login' button. Below the form, there are links for 'Not a user? Register with this site' and 'Forgot your password?'. The ISSN number 'ISSN: 2289-7526' is displayed at the bottom left.

## Step 4:

- If you are login to the site, you will see the figure as shown below. To submit the manuscript, please click the (New Submission)



The screenshot shows the user home page of the Jurnal Kejuruteraan website. The header is identical to the login page. The main content area is titled 'User Home' and contains a section for 'Jurnal Kejuruteraan (Journal of Engineering)' with a 'New Submission' button. Below this, there is a 'My Account' section with links for 'View My Journals', 'Edit My Profile', 'Change My Password', and 'Logout'. The ISSN number 'ISSN: 2289-7526' is displayed at the bottom left. On the right side, there is a sidebar with a 'Quick Links' section, a 'User' section indicating the user is logged in as 'Shams', a 'Notifications' section, a 'Font Size' section, and an 'Information' section.

## Step 5:

- Please tick the submission checklist and follow all steps required as below:

HOME ABOUT USER HOME ANNOUNCEMENTS ETHICS STATEMENT USER GUIDES CONTENTS WEBSITE

ARCHIVES

Home » User » Author » Submissions » New Submission

### Step 1. Starting the Submission

1. START 2. UPLOAD SUBMISSION 3. ENTER METADATA 4. UPLOAD SUPPLEMENTARY FILES 5. CONFIRMATION

Encountering difficulties? Contact [Tahira Husein Ismail](#) for assistance.

#### Submission Checklist

Indicate that this submission is ready to be considered for this journal by checking off the following (comments to the editor can be added below).

- ☒ The submission has not been previously published, nor is it before another journal for consideration (or an explanation has been provided in Comments to the Editor).
- ☒ The submission file is in OpenOffice, Microsoft Word, RTF, or WordPerfect document file format.
- ☒ Where available, URLs for the references have been provided.
- ☒ The text is single-spaced; uses a 12-point font; employs italics, rather than underlining (except with URL addresses); and all illustrations, figures, and tables are placed within the text at the appropriate points, rather than at the end.
- ☒ The text adheres to the stylistic and bibliographic requirements outlined in the [Author Guidelines](#), which is found in About the Journal.
- ☒ If submitting to a peer-reviewed section of the journal, the instructions in [Creating a Word Document](#) have been followed.

Journal's Privacy Statement

6

## Step 6:

- Upload the manuscript into the site. Please ensure the manuscript in the OpenOffice, Microsoft Word, RTF or WordPerfect document file format.

HOME ABOUT USER HOME ANNOUNCEMENTS ETHICS STATEMENT USER GUIDES CONTENTS WEBSITE

ARCHIVES

Home » User » Author » Submissions » New Submission

### Step 2. Uploading the Submission

1. START 2. UPLOAD SUBMISSION 3. ENTER METADATA 4. UPLOAD SUPPLEMENTARY FILES 5. CONFIRMATION

To upload a manuscript to this journal, complete the following steps:

1. On this page, click Browse (or Choose File) which opens a Choose File window for locating the file on the hard drive of your computer.
2. Locate the file you wish to submit and highlight it.
3. Click Open on the Choose File window, which places the name of the file on this page.
4. Click Upload on this page, which uploads the file from the computer to the journal's web site and renames it following the journal's conventions.
5. Once the submission is uploaded, click Save and Continue at the bottom of this page.

Encountering difficulties? Contact [Tahira Husein Ismail](#) for assistance.

#### Submission File

No submitted file uploaded.

Upload submission file  No file chosen

After uploading the manuscript...

#### Submission File

File Name	2017-09-08-1-04.doc
Original file name	2017-09-08-1-04.doc
File Size	61KB
Date uploaded	2017-09-08 10:40 AM

Replace submission file  No file chosen

7



## Step 7:

- Please fill in the information regarding authors (Add authors), Title and Abstract, Indexing and Contributors and Supporting Agencies (if any).

HOME ABOUT USER HOME ANNOUNCEMENTS ETHICS STATEMENT USER GUIDES  
 ARCHIVES

Home > User > Author > Submissions > New Submission

### Step 3. Entering the Submission's Metadata

1. START 2. UPLOAD SUBMISSION 3. ENTER METADATA 4. UPLOAD SUPPLEMENTARY FILES 5. CONFIRMATION

Authors

First Name \*

Title and Abstract

Title \*

Abstract \*

Indexing

Language \*

English (US) French (FR) Spanish (ES) German (DE)

Contributors and Supporting Agencies

Search agencies (a person, an organization, or a service that made contributions to the content or provided funding or support for the work presented in this submission. Examples: John Smith, John Doe, Mary University, Mary University, Department of Computer Science).

Agency \*

Save and continue Cancel

## Step 8:

- If there is any supplementary files, please upload here.

HOME ABOUT USER HOME ANNOUNCEMENTS ETHICS STATEMENT USER GUIDES CONTENTS WEBSITE  
 ARCHIVES

Home > User > Author > Submissions > New Submission

### Step 4. Uploading Supplementary Files

1. START 2. UPLOAD SUBMISSION 3. ENTER METADATA 4. UPLOAD SUPPLEMENTARY FILES 5. CONFIRMATION

This optional step allows Supplementary Files to be added to a submission. The files, which can be in any format, might include (a) research instruments, (b) data sets, which comply with the terms of the study's research ethics review, (c) sources that otherwise would be unavailable to readers, (d) figures and tables that cannot be integrated into the text itself, or other materials that add to the contribution of the work.

ID	TITLE	ORIGINAL FILE NAME	DATE UPLOADED	ACTION
No supplementary files have been added to this submission.				

Uploaded supplementary file

Choose File No file chosen Upload

Save and continue Cancel



## Step 9:

- Confirming the submission by clicking on the finish submission.

HOME ABOUT USER HOME ANNOUNCEMENTS ETHICS STATEMENT USER GUIDES CONTENTS REQUESTS ARCHIVES

Journal Title

USER

You are logged in as...

Username

- My Account
- My Profile
- My Sub

NOTIFICATION

- Mail
- Message

FONT SIZE

INFORMATION

- Our Journal
- Our Authors
- Our Subscribers

Home » User » Author » Submissions » New Submission

### Step 5. Confirming the Submission

1. START 2. UPLOAD SUBMISSION 3. EDITOR MESSAGE 4. UNLOCK SUBMISSION FILE 5. **CONFIRMATION**

To submit your manuscript to Jurnal Kejuruteraan (*Journal of Engineering*) click Finish Submission. The submission's principal contact will receive an acknowledgement by email and will be able to view the submission's progress through the editorial process by logging in to the journal web site. Thank you for your interest in publishing with Jurnal Kejuruteraan (*Journal of Engineering*).

#### File Summary

ID	ORIGINAL FILE NAME	TYPE	FILE SIZE	DATE UPLOADED
58137	JKEJ-XXXXX.DOC	Submission File	218KB	08-08

[Finish Submission](#) [Cancel](#)

10

## Step 10:

### ***SUBMISSION COMPLETE.***

*You will get submission acknowledgement through the email from JKEJ committee.*

*Thank you for your interest in publishing with Jurnal Kejuruteraan (*Journal of Engineering*).*

#### Additional note:

- With the online journal management system that we are using, you will be able to track its progress through the editorial process by logging in to the journal web site.
- After receiving an initial evaluation from the Editor and comments from two reviewers, the author should amend/improve the articles and provide the Table of Correction based on the comments.

11