



# AHMAD KAMAL ARIFFIN

## Professor (Ir. Dr.)

### RESEARCH

More than 25 years, involved in research on Computational Fracture & Fatigue, Computational Corrosion, Computational Solid & Powder Mechanics, Finite/Boundary/Discrete Element Methods/Parallel Computation, Uncertainty Analysis. The recipient of prestige European Union Horizon 2020 Grant with five other top universities in Europe for the large structural reliability and uncertainty research.

### ACADEMIC QUALIFICATIONS

- **Ph.D.** in Mechanical Engineering, University of Wales Swansea, U.K.
- **B.Eng** in Mechanical Engineering, Universiti Kebangsaan Malaysia

### EXPERTISE

Computational Solid & Powder Mechanics  
Computational Fracture Mechanics  
Computational Corrosion  
Finite/Boundary/Discrete Element Methods  
Parallel Computation

### RESEARCH GROUP

Computational and Experimental Research Group

For list of publications and current research grants, please click UKM Sarjana.

<https://bit.ly/SarjanaAKA>

### CONTACT

Phone  
+6019 273 5012

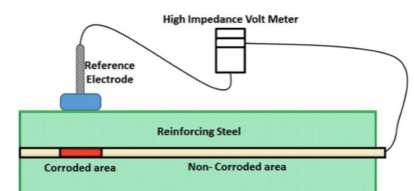
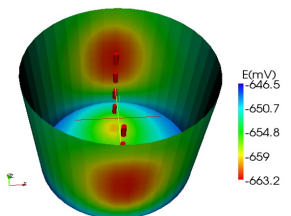
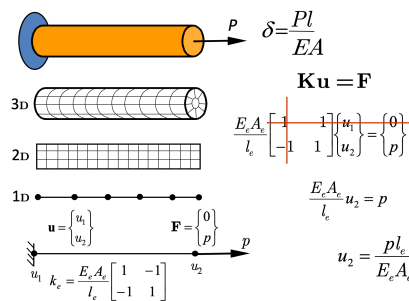
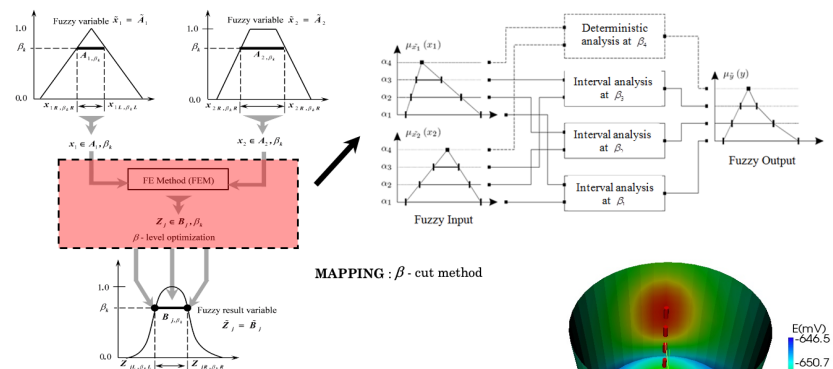
Email  
[kamal3@ukm.edu.my](mailto:kamal3@ukm.edu.my)

Website  
[www.ukm.my/kamal3](http://www.ukm.my/kamal3)

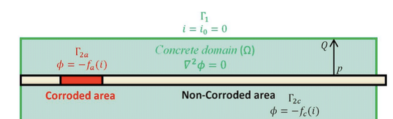
YouTube  
<https://bit.ly/KamalTV>

Facebook  
<https://www.facebook.com/ahmad.k.ariffin>

### RESEARCH AT A GLANCE



Schematic of half-cell potential technique



Boundary conditions for reinforced concrete corrosion modeling

