



# HAWA HISHAMUDDIN

Senior Lecturer (Dr.)

## RESEARCH

Expert in supply chain optimisation, particularly in inventory modelling with uncertainty, disruption management and decision sciences. Recent research interest include sustainability and resiliency modelling in supply chain systems, renewable energy, and reverse logistics.

## ACADEMIC QUALIFICATIONS

- **B.Sc.** (Industrial Eng.) Purdue University, USA (2003)
- **Ph.D.** (Comp. Sc.) University of New South Wales Canberra, Australia (2013)

## EXPERTISE

Supply Chain Optimisation  
Disruption Management  
Sustainable Supply Chain Management  
Operations Research

## RESEARCH GROUP

- Operations Management Systems Intelligence & Optimisation (OPTEMIS)

For list of publications and current research grants, please click [UKM Sarjana](#).

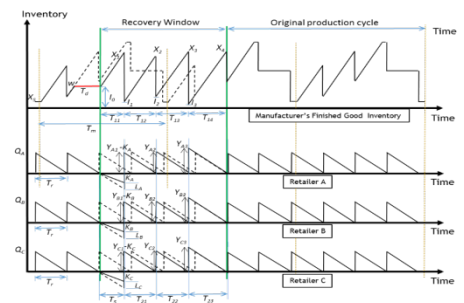
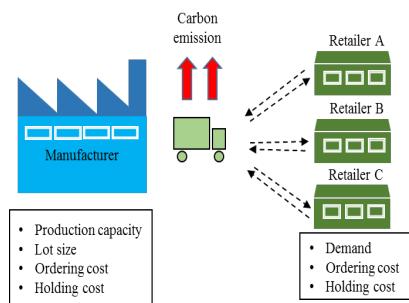
[UKM Sarjana](#)

## CONTACT

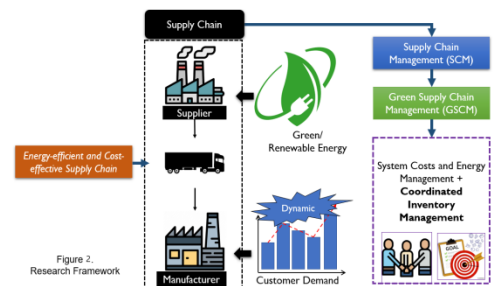
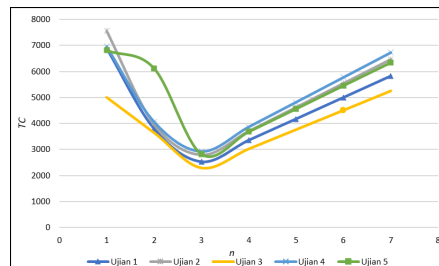
PHONE:  
+603-8921 6516

EMAIL:  
[hawa7@ukm.edu.my](mailto:hawa7@ukm.edu.my)

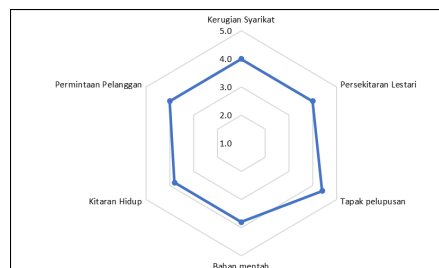
## RESEARCH AT A GLANCE



## Sustainable and Resilient Supply Chains



## Renewable Energy



## Reverse Logistics Optimisation