



SALLEHUDDIN HARIS

Associate Professor (Dr.)

RESEARCH

Specialises in control, mechatronic and cyber physical systems. Leader of the Instrumentation, Dynamics and Control of Engineering Systems (INDICES) Research Group. Research interests include autonomous robotic systems, magnetic gear systems, vehicle dynamics and control, networked control systems, human-machine collaboration technologies, and computer algebra applications in control systems.

ACADEMIC QUALIFICATIONS

- **B.Eng.** (Manufacturing Systems Eng.) University of Leeds, UK (1993)
- **M.Sc.** (Mechatronics) King's College London, UK (1996)
- **Ph.D.** (Electronics & Electrical Eng.) University of Southampton, UK (2006)

EXPERTISE

System Dynamics and Control
Mechatronics
Cyber Physical Systems

RESEARCH GROUP

- Instrumentation, Dynamics and Control of Engineering Systems (INDICES)

For list of publications and current research grants, please click UKM Sarjana.

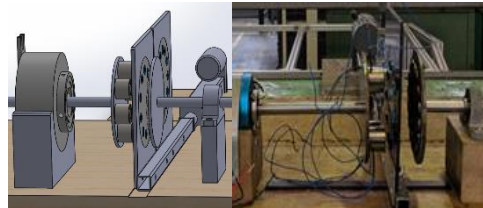
[UKM Sarjana](#)

CONTACT

PHONE:
+603-8921 6512

EMAIL:
sallehmf@ukm.edu.my

RESEARCH AT A GLANCE

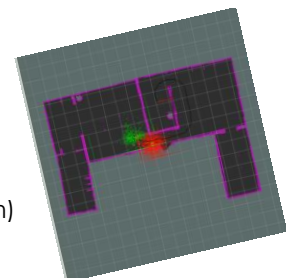


Contactless magnetic gear with changeable ratio
- concept (left) and prototype (right)



Supervisory control of mobile robot over internet and cloudserver

Optimal multiple model adaptive controller design for active vehicle suspensions
- suspension model (top) and optimised candidate model selection (bottom)



Simulation of multiple mobile robots moving towards an objective as a team