

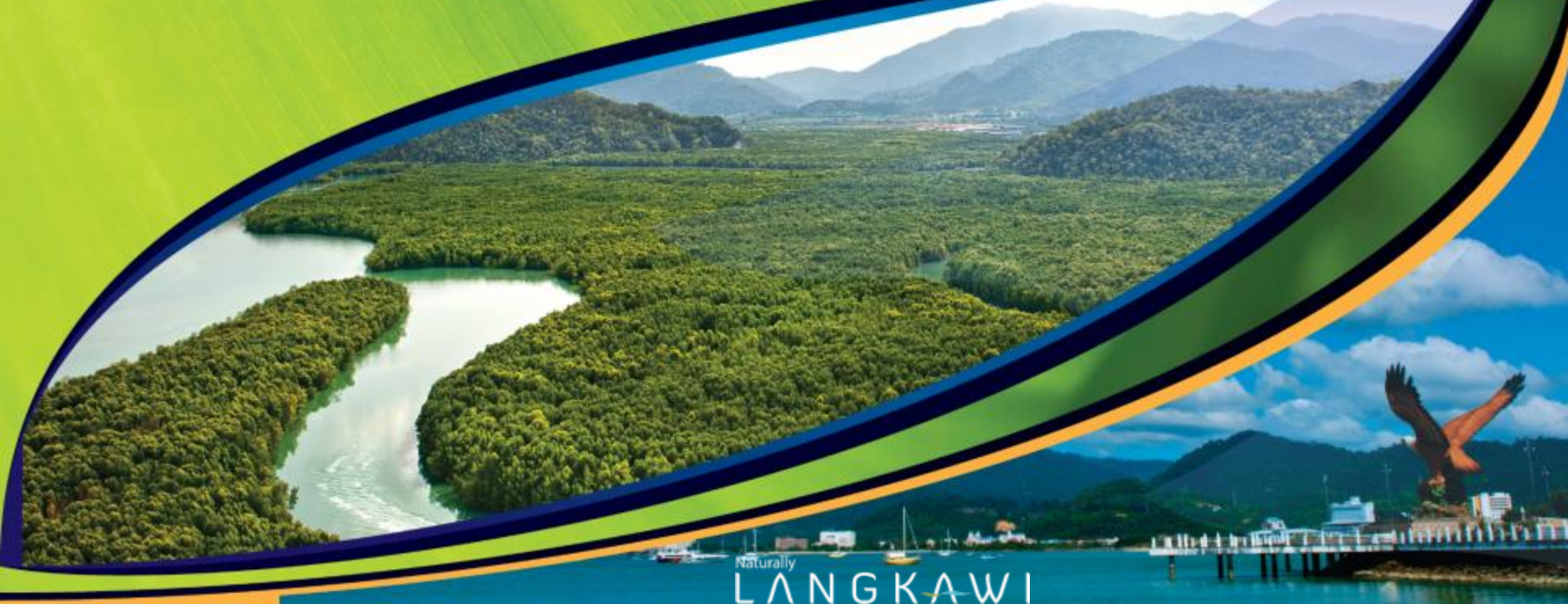
International Workshop on Sustainable Science 2015



LANGKAWI GLOBAL GEOPARK EXPERIENCE

By

Mohd Nizam Mohd Nasir
Langkawi Development Authority



📍 LANGKAWI

Latitude : N 6° 19' 23.88"
Longitude : E 99° 51' 17.006"



CHRONOLOGY OF LANGKAWI GEOPARK

Geopark Expert Group (UNESCO) inspected Langkawi



29 Mar - 2 April 2007

1st Asia Pacific Geoparks Conference at Langkawi, Malaysia



13-15 Nov 2007

1 Jun 2007



Langkawi was declared as the 52nd Global Geopark

4th International Geopark Conference



12 - 15 April 2010

5 April 2008



1st Regional Meeting Asia Pacific Geoheritage and Geoparks Network

Second revalidation



2015

2011



Revalidation of Langkawi Geopark

FACTS OF
LANGKAWI
GEOPARK

1
An
archipelago of
99 islands –
all are
Geopark

2
Langkawi
Geopark, The
1st in South
East Asia

3
**Complete
Paleozoic**
geological
sequence (550-
150 million years)

4
78 species of
mangroves out
of **114** world
species
representing
68%

5
The highest
ancient sea
level found in
South East
Asia
(**23** meter)

6
The oldest
rock formation
in the region
(**550** million
years) & **1
billion** year
old drop stone

MACHINCHANG CAMBRIAN GEOFOREST PARK

(42.74 km² area)



KILIM KARST GEOFOREST PARK

(24.15 km² area)



DAYANG BUNTING MARBLE GEOFOREST PARK

(38.5 km² area)

Geoforest park is a new conservation concept that encompass both geology and forest element where **education and research activities** are strongly promoted

ACCOLADES

TOP 5 INSANELY GORGEOUS BEACHES

By US State Publication



TOP 50 BEACHES OF THE WORLD'S 100 BEST BY CNN

*Tanjung Rhu
Ranked 49th*



TOP 10 TOURISM PRODUCTS IN MALAYSIA

*Langkawi Cable Car
Ranked 3rd*



TOP 10 ISLANDS IN ASIA



LANGKAWI AT PRESENT

Geopark status enhanced the
livelihood of communities



STRATEGIC PLAN

MANAGEMENT OF LANGKAWI GEOPARK

Langkawi Tourism
Blueprint 2011-2015



Community Plan
2014 -2015



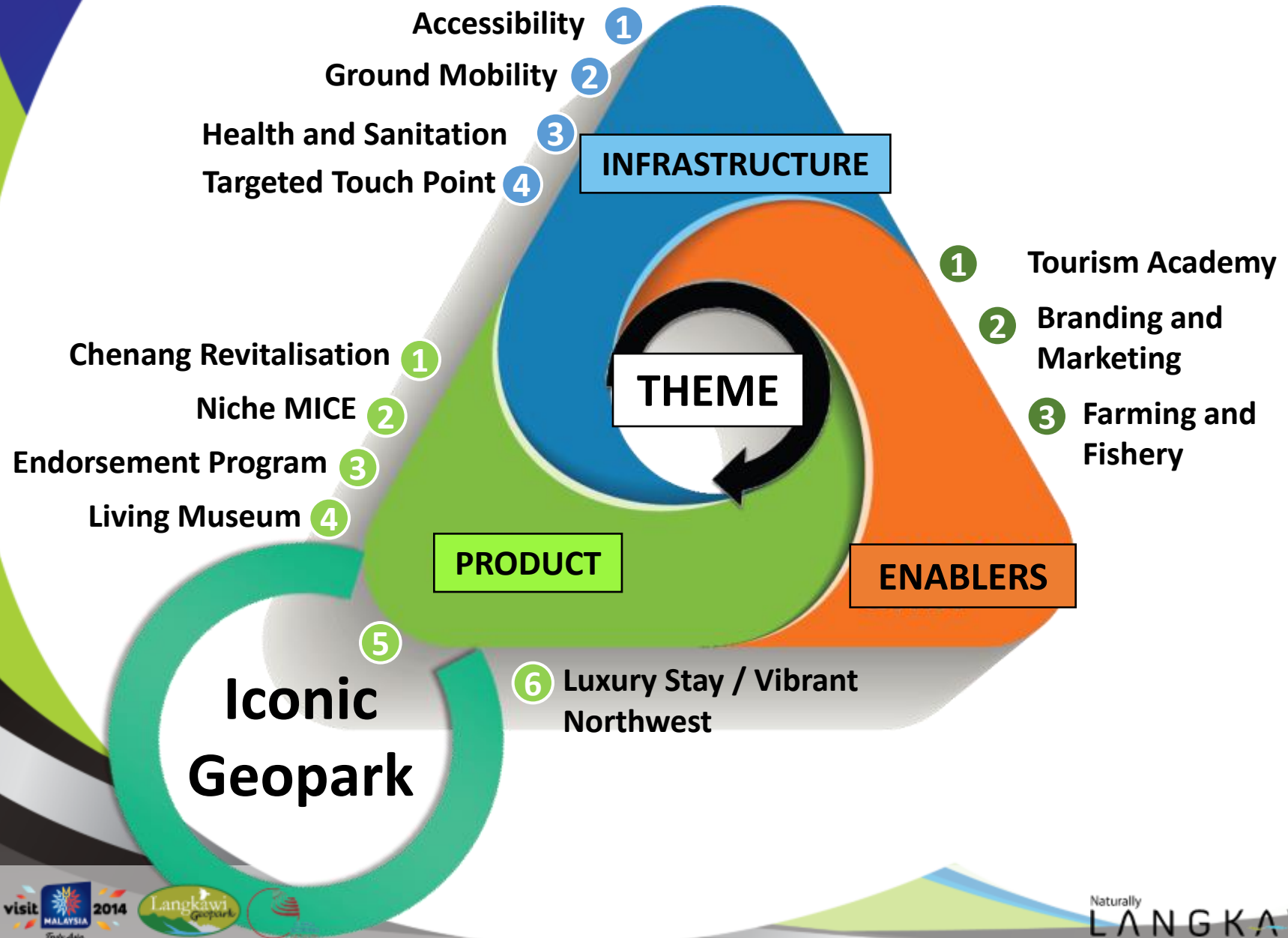
Marketing Plan
2014 - 2016



Langkawi Geopark
Management Plan
2012-2030



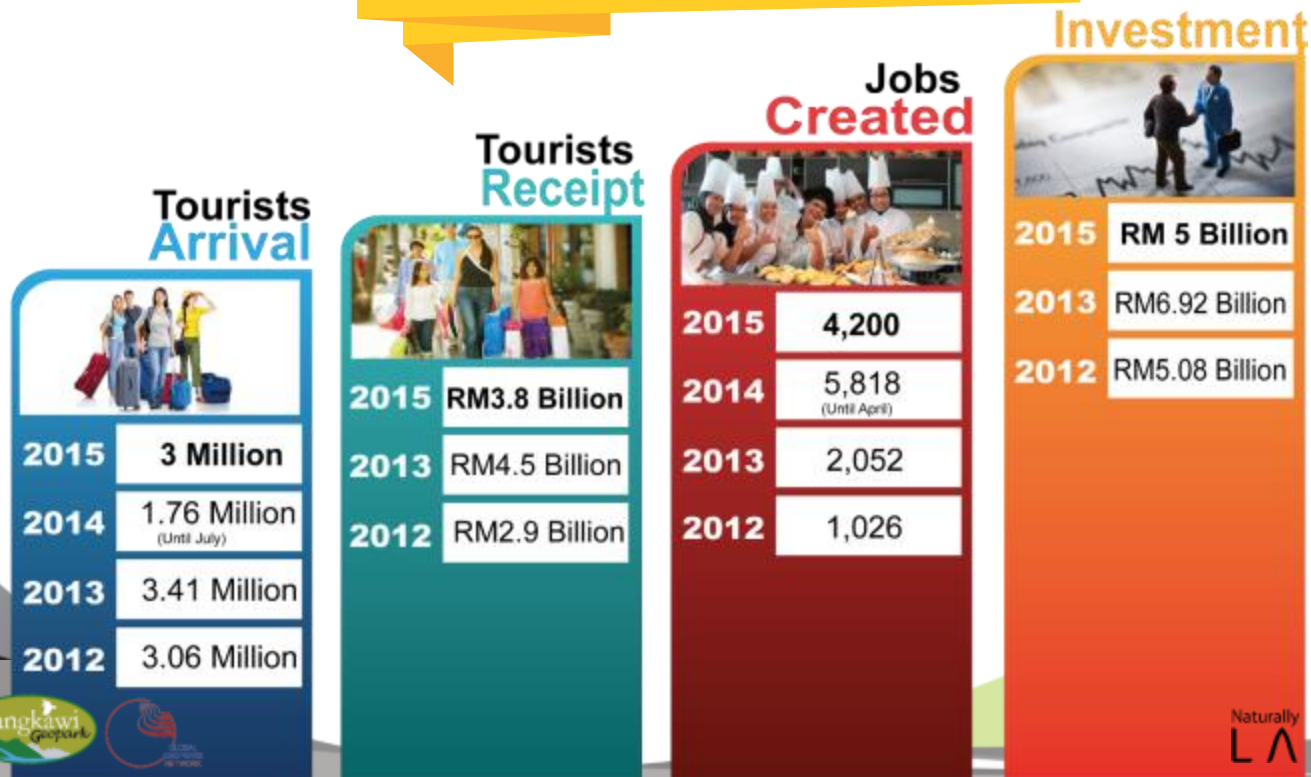
LANGKAWI TOURISM BLUEPRINT (2011-2015)



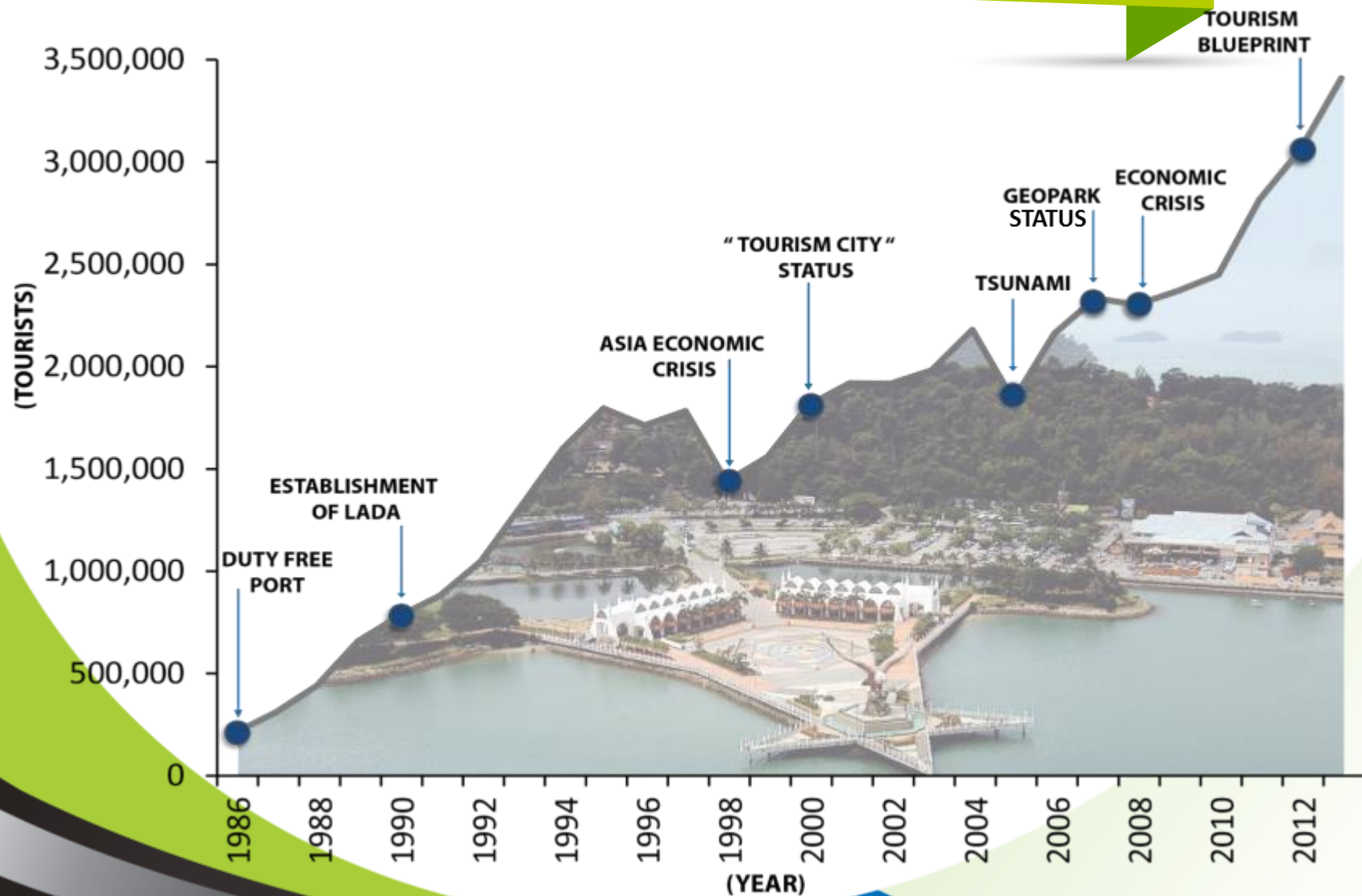
TARGET 2015



OUTCOME



TOURISTS ARRIVAL TREND TO LANGKAWI 1986 - 2012



ACTION PLAN



1

Conservation

2

Enforcement

3

Beautification and Cleanliness

4

Promotion

5

Infrastructure Upgrading

6

Governance

7

Education

8

Community Involvement

CONSERVATION

Conservation of Heritage



- Culture, Nature, Legend and Myth
- Project for World Heritage Site in Machincang Cambrian

Research



- Cultural & Heritage Study
- Carrying Capacity
- Mangrove Erosion Control Study in Kilim
- Exploring Sustainable Island Tourism in Langkawi Geopark
- Field Study Grant

Iconic Program



- Asian Bird Fair and Conference 2014
- Langkawi GeoFest 2014
- Langkawi International Mountain Bike Challenge (LIMBC) 2014
- World Cup Asia Paintball
- Ironman Triathlon

Enforcement



- Tourist Boat Operation Guidelines
- 1Langkawi Enforcement

Infrastructure




- Interpretive Board
- Signage
- Visitor Center

ENFORCEMENT



BEAUTIFICATION & CLEANLINESS

TO INCULCATE AWARENESS AMONG LOCAL PEOPLE

-  Our Island Campaign



BEAUTIFICATION

- Langkawi Beautification Plan
- Integrated Collaboration among government agencies and industry players

CLEANLINESS

- Special Grant given by Government (RM7.8 Million/ Year)
- Upgrading Sewerage and Silage System (RM10 Million)
- Tuba Island Incinerator (RM2 Million)

PROMOTION



INFRASTRUCTURE



Upgrading tourist facilities in
Ayer Hangat Village



Upgrading tourist facilities
in Taman Lagenda



Geopark Discovery Center,
Kilim



Establishment of 1
Malaysia Restaurant



Wave breaker study at
Dayang Bunting Island and
Kuah jetty



Upgrading boardwalk and
jetty at Gua Kelawar



Upgrading fisherman jetty,
tourist facilities and the
landscape in Kilim



Upgrading tourist facilities
in Dayang Bunting Island



Upgrading tourist facilities
in Telaga Tujuh
(viewing deck)



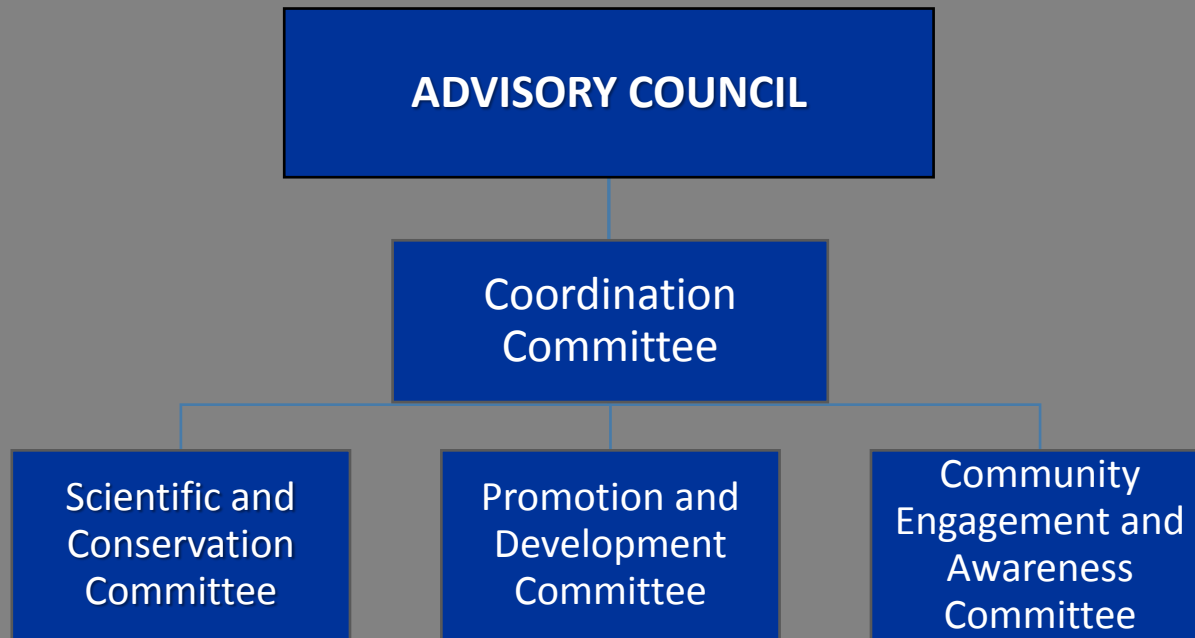
Beautifying of waterfalls
in Langkawi

ICONIC GEOPARK

**ALLOCATION
2011-2015
RM45.6 Million**

GOVERNANCE

1



2



EDUCATION

Geopark Camp



- Exposure towards the survival of nature and legacy of Langkawi Geopark

Geopark To School

- Introductory program on Langkawi Geopark to all level of children



Geo-Teacher Program

- Training program and exposure of Langkawi Geopark concept to the teachers



School To Geopark

- Visit to sites with comprehensive module on the nature



COMMUNITY INVOLVEMENT

Langkawi Tourism Awards (LiTA)

- Achievement and recognition for industry player

Homestay (First Prize UNWTO Ulysses Award)

Edu-Tourism Dayang Bunting

- Rebranding of Tuba Island and Dayang Bunting Island

My Tourism Quality Assurance (MyTQA)

- Best standard tourism practises

Geopark Partner

- Smart partnership between business/ organization/ individuals



CHALLENGES

SUSTAINABLE DEVELOPMENT

Where the geological heritage is conserved and the natural resources are wisely managed



Agencies involvement

Mentality of the local people

Lack of enforcement

Add more values to tourism products and attractions



Uncontrollable Development

Naturally
LANGKAWI

WAY FORWARD



Comprehensive
Conservation And
Protection Plan

Focus and intensify efforts in
creating public awareness and to
educate people on Geopark



To maintain Green Card
for 2015 Global Geopark
Revalidation

Naturally
LANGKAWI

THANK YOU...



www.langkawigeopark.com.my



www.facebook.com/langkawiglobalgeopark



naturallylangkawi.my

