



開かれた未来へ。

筑波大学
University of Tsukuba

Online Cultural Exchange Activities for Promotion of Student Mobility with Partner Institutions

Dr. NOMURA Nakao

Regional Director for ASEAN and Taiwan / Office of Global Initiatives

Deputy Director for International Exchange Support / Student Support Center

Manager for International Admissions / Admissions Center

Associate Professor / Faculty of Life and Environmental Sciences

University of Tsukuba





開かれた未来へ。

筑波大学

University of Tsukuba

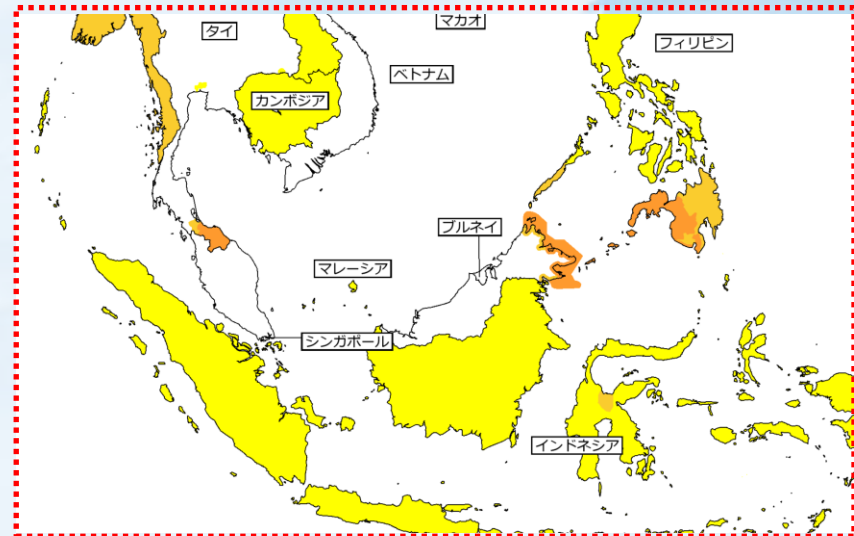
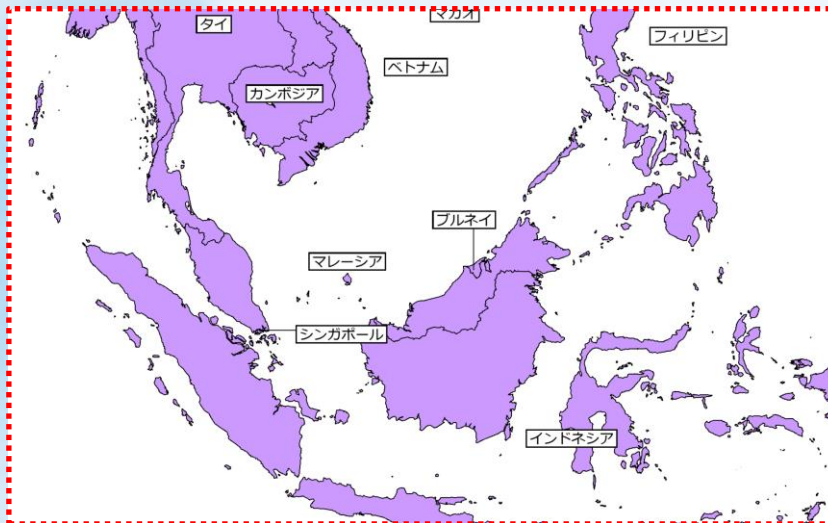
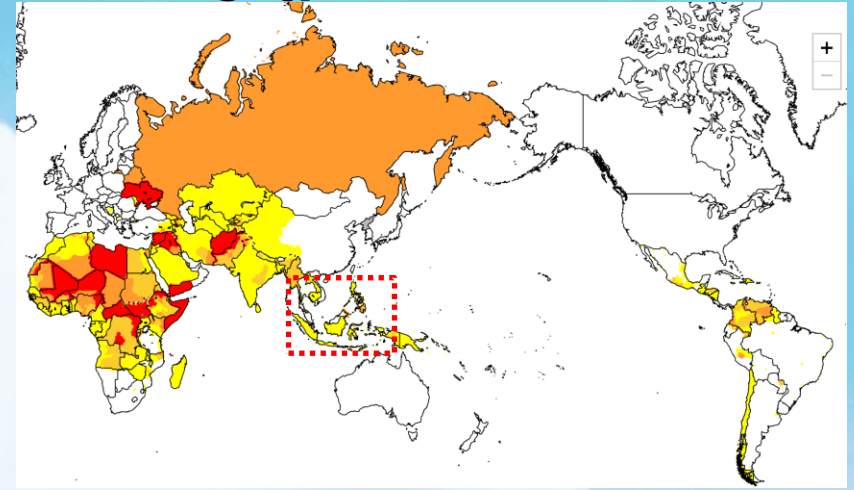
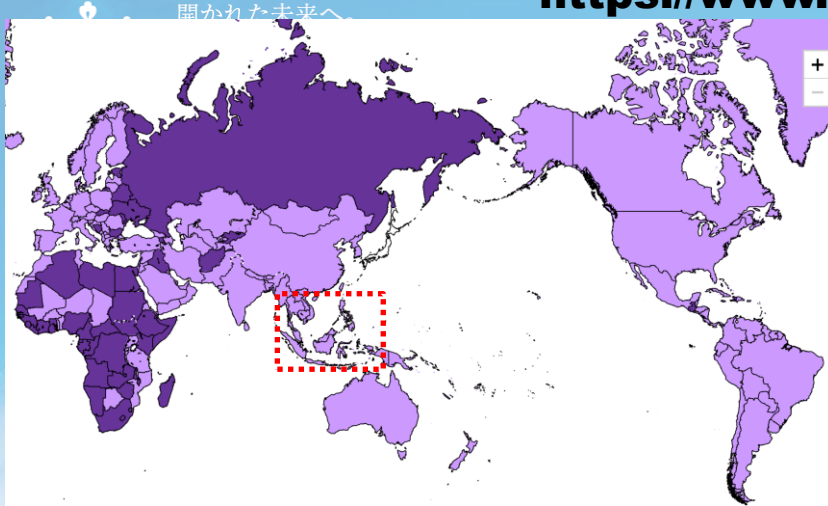
Current situation related with Student Exchange

Guideline for study abroad (Outbound)



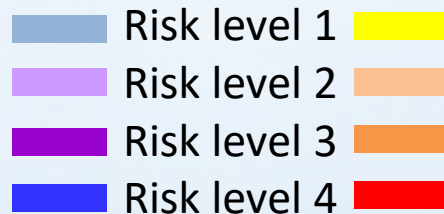
Risk level in Overseas Travel Safety Information by Ministry of Foreign Affairs

<https://www.anzen.mofa.go.jp/>



Infectious disease risk

General risk





開かれた未来へ。

筑波大学
University of Tsukuba

Current situation related with Student Exchange

Guideline for study abroad (Outbound) by MEXT

Japanese boarder control under Pandemic and
impact on inbound International Students

Imbalance between inbound and outbound due to
differences in study abroad guidelines

Discouragement in students for study abroad

Support for student under difficulty in continuation of studies
due to **international conflict**

THE
FUTURE.



開かれた未来へ。

筑波大学
University of Tsukuba

Transformation of Student Exchange

Online courses using IT tools

Supervision for thesis research study through online

Online short-term/internship program

Virtual cultural exchange activities



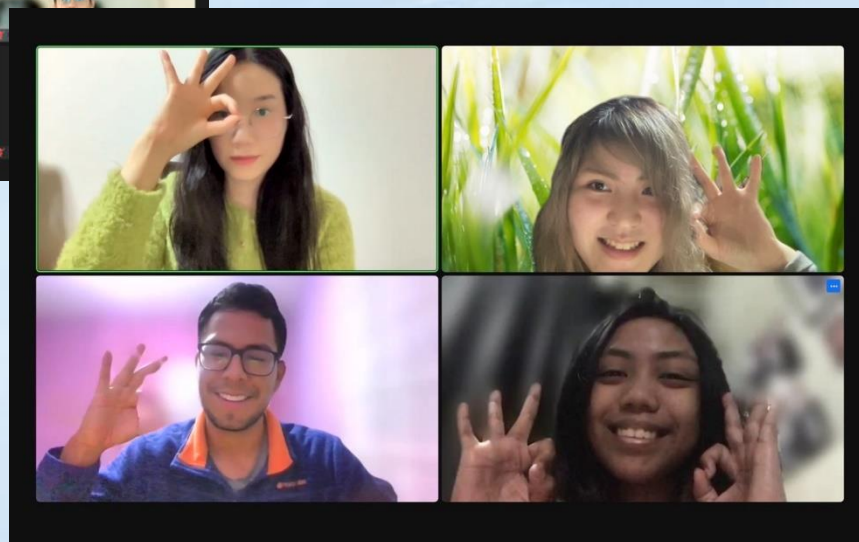
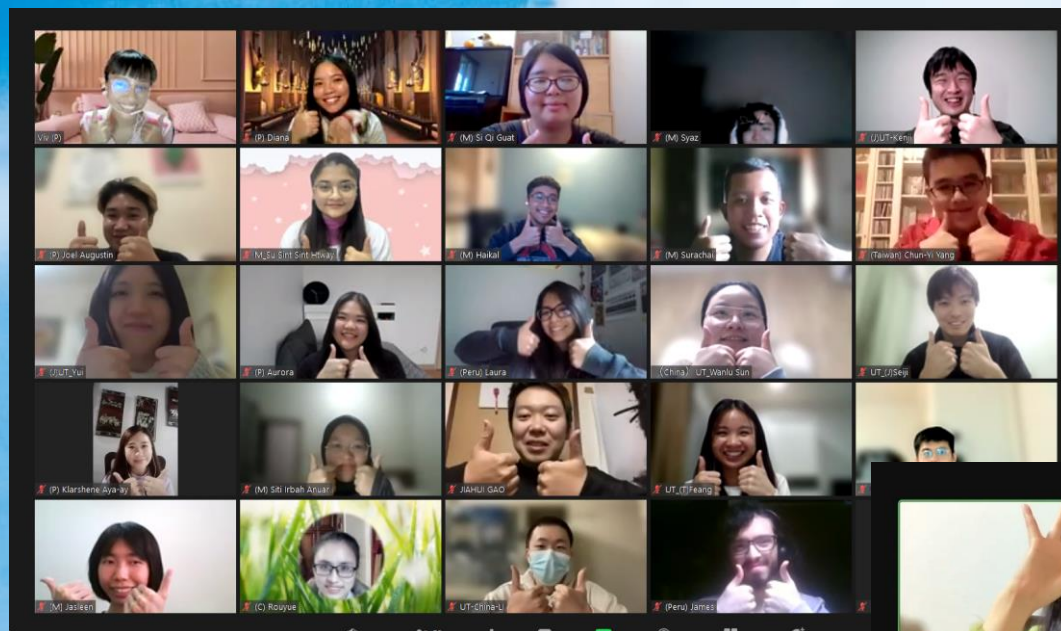


開かれた未来へ。

筑波大学

University of Tsukuba

TSUKU-CHAT: Virtual cultural exchange activities



NE
RE.



開かれた未来へ。

筑波大学

University of Tsukuba

TSUKU-CHAT: Virtual cultural exchange activities

Continuously conducting for 4 semesters since April, 2020

1 hour/session

10-15 minutes for plenary

45-50 minutes in break-out

7-8 sessions/semester

More than 100 participants every session

30-40% U of Tsukuba

40-50% partner institutions in Asia

10-20% partner institutions in other regions



Several spin-off events with partner universities

Online academic debates

Japanese culture class

IMAGINE
THE
FUTURE.



開かれた未来へ。

筑波大学
University of Tsukuba

Important points for online cultural activities (1)

**Simple & Easy method for participation, but
better to require registration**

**Appropriate time length for chat:
1 hours**

Regularly in evening time



Clear and simple explanation of purpose and rules in every session





開かれた未来へ。

筑波大学
University of Tsukuba

Important points for online cultural activities (2)

Employ full-time student as organizing staff

**Suitable online tool to accommodate students
accessing from various devices
under different conditions of internet connection**

**Some interesting data/anecdotes in plenary session
to stimulate chat in breakout rooms**

Flexibility in topics or themes

Gaps in affinity with online activity in difference region



Other online cultural activities in UT

G-CHAT

ジー・チャット
G-Chat

そんなあなたに！

「G-Chat」

内容・特徴

- ・少人数グループ(1-3名)での会話
- ・自分の英語のレベルに合うスタッフが選べる！
- ・独立の授業と無料のフリートークの場
- ・スタッフが丁寧にアドバイス！
- ・初心者向けと中級者向けのセッションあり！
- ・オンラインで実施

日程・申込方法

- ・週ごとに更新されるカレンダーから応募！
- ・原則1人週1回
- ・先着順
- ・応募期限及び応募方法はQRコードのウェブサイトから！

さあ、英会話の第一歩を。

筑波大学 グローバル・commons
University of Tsukuba Global Commons

Online Group Chat for **Improving Conversation Skill in English, Japanese**

GOT-CHAT

Do you want a language exchange partner?
Do you want to improve your Japanese speaking skill?

▼ If Yes, Join to

Tsukuba Language-Exchange-Program

ガッツチャット!
GOTCHAT!

For UT students and Students from partner universities of UT

Global Commons introduce a
1 on 1 language exchange partner!

How to apply?

- 1 Registration
- 2 Receive "you've been matched" mail.
*only those who got matched will be contacted.
- 3 First Meeting with Global commons staff
*about 10min explain rules and introduction
- 4 Let's start conversation!

Tsuku-Chat!

Online English Chat Event
Every Wednesday 19:00 ~ 20:00
Fun discussion and game in small groups

Try with us!

University of Tsukuba
Global Commons

Online man-to-man chat for **learning a specific foreign languages (Spanish, French, Korean, Malay etc.)**

J-CHAT

2021 春の J-CHAT
～にほんごではなそ～

Free Online

International students 留学生
Japanese students 日本人学生
協定校学生 Partner school students

【What】
国際交流ができる！
To interact with students with variety of background.
日本語での会話をしよう！日本語初心者歓迎！
To chat in Japanese! Beginners welcome!

【How】
少人数グループに分かれて、日本語で会話をします。
(日本語のレベルは問いません！)
This chat program is mainly for those studying Japanese to practice the language. (Any level is welcome!)
The program is not meant for teaching Japanese.

【Registration】

【Dates】
Every Tuesday
19:00~20:00 in JST

Apr. 20	Apr. 27	Jun. 1	Jun. 8	Jun. 15	Jun. 22
May. 11	May. 25				

【Who】
All members of Univ. of Tsukuba and students from partner univ.
筑波大学留学生・協定校の学生

筑波大学 グローバル・commons
University of Tsukuba Global Commons

Online Group Chat for **Japanese Language and Culture**

City-CHAT cafe

Let's chat in English!
英語でおしゃべり

Tsukuba City Chat Cafe ONLINE!

4月~7月 ZOOM!で開催!!

Registration Form

18th April
16th May
20th June
18th July 2021

前半13:30-14:30 後半14:45-15:45

会話がスムーズになるように、人数制限もかけられています。

要登録・参加費無料。入場は開始後10分以内

Registration required. You may leave anytime but enter within 10 minutes after the starting time.

一度の登録で、各ZOOM会議室のURLとその参加者リストが送付されます。

Register once to receive login information for each chat room and info. on related activities!

Be Cosmopolitan.

City Chat Café serves as a place to expand cultural exchanges and offers opportunity to share your stories. Looking forward to having you at the event!

様々な文化背景を持つ人々が出会い、おしゃべりを楽しい国際交流イベントです。筑波大学の留学生とデールを前め、自己紹介や母国の紹介など自由な話題で気軽に英語や日本語で会話を楽しまします。

<Contact>
globalcommons1203@gmail.com

一般財団法人 つくば国際交流協会

Online Chat between **UT students and people from local community**



開かれた未来へ。

筑波大学
University of Tsukuba

Thank you very much for your kind attention.

nomura.nakao.fa@u.tsukubai.ac.jp

