

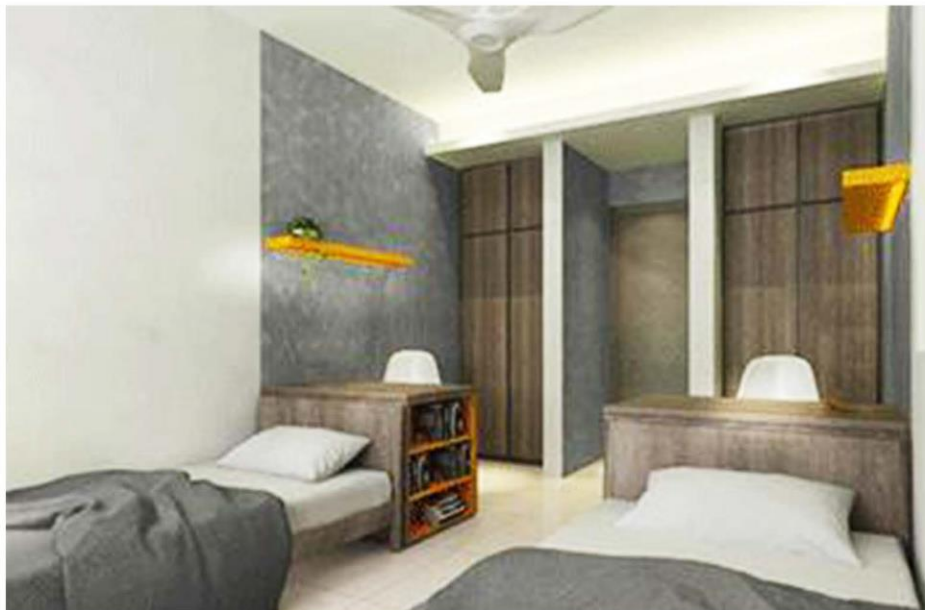


STUDENT PREMIER HOUSING AT IBU ZAIN RESIDENTIAL COLLEGE (KIZ) UKM BANGI CAMPUS



<https://www.ukm.my/kiz/>

ACCOMMODATION GALLERY



ROOM RENTAL RATE



Sharing Room
MYR 490.00 monthly/person



Single Room
MYR 680.00 monthly

- ① Students are required to pay deposit of one month's rental fee plus the first month of a fee (1+1) during the day of check-in).
- ② For students that staying on campus will need to pay the College Activity Fee MYR 50.00 per semester.

For Bookings, please contact:

Tel: 03-89213186 | www.wasap.my/601156888300
Facebook : KIZ Official | Instagram: ukm_kolejibuzain

ACCOMMODATION Near UKM



STANDARD
CONDOMINIUM FACILITIES

Any enquiry please call / Whatsapp

 **012 - 5272 544**

 **mcrproperty2017@gmail.com**

 Find us on Facebook:
Mohamad Shamim
Real Estate Negotiator

Condominium Rental Rate



KAJANG

EUR 300 - EUR 360
USD 355 - USD 430

Build up : 850 sqft to 1000 sqft

Facilities : Standard Condominium facilities.

Distance to UKM : 8 km (15 minutes)

Amenities : Tesco Kajang, Metro Kajang and etc2

Transportation : Grab, Uber, MRT and KTM



BANGI

EUR 300 - EUR 360
USD 355 - USD 430

Build up : 500 sqft to 950 sqft

Facilities : Standard Condominium facilities.

Distance to UKM : 8 KM (15 minutes-20 minutes)

Amenities : IOI City Mall, Bangi Wonderland Putrajaya

Transportation : KTM Bangi, Grab, Uber



SERDANG

EUR 260 - EUR 400
USD 310 - USD 500

Build up : 500 sqft to 900 sqft

Facilities : Standard Condominium facilities.

Distance to UKM : 18 KM (25 minutes)

Amenities : The Mines, IOI Mall Putrajaya

Transportation : LRT, KTM, Grab, Uber



PUCHONG

EUR 300 - EUR 500
USD 355 - USD 600

Build up : 500 sqft to 1200 sqft

Facilities : Standard Condominium facilities.

Distance to UKM : 27 km (31 minutes)

Amenities : Giant hypermarket, IOI Shopping Mall

Transportation : LRT, Grab, Uber and etc



CHERAS

EUR 300 - EUR 500
USD 355 - USD 600

Build up : 500 sqft to 1000 sqft

Facilities : Standard Condominium facilities.

Distance to UKM : 20 km (30 minutes)

Amenities : Bank, Jusco Cheras, Bank and etc2

Transportation : MRT, Grab, Uber and etc



PUTRAJAYA

EUR 500 - EUR 555
USD 600 - USD 700

Build up : 500 sqft to 1000 sqft

Facilities : Standard Condominium facilities.

Distance to UKM : 16 KM

Amenities : KLIA, IOI Shopping Mall, Alamanda Shopping Mall

Transportation : Grab, Uber, and public transport.



CYBERJAYA

EUR 260 - EUR 500
USD 310 - USD 600

Build up : 500 sqft to 1100 sqft

Facilities : Standard Condominium facilities.

Distance to UKM : 24 KM (31 min)

Amenities : D'pulze Shopping Mall

Transportation : Grab, Uber and public transport.



KUALA LUMPUR

EUR 500 - EUR 800
USD 550 - USD 950

Build up : 500 sqft to 1100 sqft

Facilities : Standard Condominium facilities.

Distance to UKM : 31 KM (35 minutes)

Amenities : KLCC, Pavilion Mall and etc2

Transportation : LRT, MRT, KTM and etc



DAMANSARA

EUR 360 - EUR 500
USD 430 - USD 600

Build up : 500 sqft to 1200 sqft

Facilities : Standard Condominium facilities.

Distance to UKM : 34 KM (35 minutes)

Amenities : LRT, MRT and Subang Airport

Transportation : MRT, LRT, Grab and Uber



NILAI

EUR 260 - EUR 360
USD 310 - USD 430

Build up : 450 sqft to 950 sqft

Facilities : Standard Condominium facilities.

Distance to UKM : 23 KM (28 minutes)

Amenities : Alamanda Putrajaya, Tesco Nilai, Giant Nilai, Hospital

Transportation : Grab, Uber